

# RESEARCH BULLETIN

## WHAT'S HAPPENING IN AUGUST—SEPTEMBER 2021?

Thursday 2 September

11:00am—12:00pm

**Across the Care Group PPI Panel meeting**

Via Zoom

Contact: [anne.silvester@nhs.net](mailto:anne.silvester@nhs.net)

Monday 13 September

**Stroke and Aphasia PPI Panel meeting**

Via Microsoft Teams

Contact: [jenni.crisp@nhs.net](mailto:jenni.crisp@nhs.net)

Wednesday 15 September

2:30pm—4:00pm

**Stroke Pathway Research Interest Group (SPRIG) meeting**

Via Microsoft Teams

Contact: [katherine.sumner@nhs.net](mailto:katherine.sumner@nhs.net)

Monday 13 September

2:00pm—3:00pm

**CCA Research Centre's Associates and Fellows meeting**

Via Microsoft Teams

Contact: [katherine.sumner@nhs.net](mailto:katherine.sumner@nhs.net)

Wednesday 29 September

1.00pm—2.00pm

**Sheffield Palliative Care Research Network**

Via Microsoft Teams

Contact: [katherine.sumner@nhs.net](mailto:katherine.sumner@nhs.net)

### IN THIS ISSUE...

- 1.....WHAT'S HAPPENING? AND STAFF UPDATES.
- 2.....CCA RESEARCH CENTRE UPDATE.
- 3.....RESEARCH STUDIES AND SURVEYS.
- 4.....PPI UPDATE AND PUBLICATIONS.

GOT A NEWSWORTHY RESEARCH STORY, PROJECT, UPCOMING MEETING OR EVENT YOU'D LIKE TO SEE FEATURED IN THE NEXT BULLETIN?

PLEASE CONTACT:  
[Katherine.Sumner@nhs.net](mailto:Katherine.Sumner@nhs.net)  
OR  
[Lisa.Farndon@nhs.net](mailto:Lisa.Farndon@nhs.net)

## THANK YOU!

## WELCOME!

We would like to give huge thanks and recognition to **Tom Almond** (Directorate Research Coordinator) for all of his work and contribution to the whole Research team, over the last four years. We wish Tom good luck in his future career and his new roles as husband and father.

Hello, I have recently joined the Care Group, as a Directorate Research Coordinator and am really excited to be working with you all. My new role will entail providing extensive support to prospective and current research Principal Investigators and staff, by assisting with the set-up and delivery of both non-commercial and commercial studies. I will also support the monitoring of performance outputs and identification of potential new studies, funding calls and other opportunities that will develop the research service and strive to support the overall directorate. I have a passion for research and feel privileged to have the opportunity to continue my involvement in pioneering research, especially from a new perspective and in an exciting clinical field!



*Sarah Birchall*



*Tom and Sally*



*Tom*



**THE CLINICAL  
RESEARCH AND  
INNOVATION  
OFFICE IS ON  
TWITTER!  
[@Shef\\_Research](https://twitter.com/Shef_Research)**



**FOLLOW US!**



## CCA Care Group Research Centre



# UPDATE



### COVID 19 studies

**Lindsay Maidment** will be acting as Principle Investigator (PI) for a Long COVID-19 study in collaboration with Derby University and GILEAD Sciences: Profiling the determinants of recovery to establish novel rehabilitation guidelines to improve clinically relevant and patient reported outcomes in the post-COVID-19 period.

Lindsay has also been involved as PI, for the REGAIN study, Rehabilitation Exercise and psychological support After covid-19 Infection: a multi-centre randomised controlled trial, which is currently open to recruitment!

**Catriona Mayland** is acting as PI in a study looking at the Rapid evaluation of the COVID-19 pandemic response in palliative and end of life care: international delivery, workforce and symptom management

(CovPall). She has currently recruited 7 out of the 10 target participants!

Along with other directorates in the Trust, IGSM are currently involved in supporting the Randomised Evaluation of Covid-19 Therapy (RECOVERY) study, which has now over-recruited past the 250 target!

### Non-COVID studies

There are still a number of non COVID studies that we are continuing to support or are in the process of setting up.

**Louise Patterson** in collaboration with the NIHR is currently recruiting successfully to the RETAKE study: RETURN to work After stroke: Early vocational rehabilitation compared with usual care for participants: an individually randomised controlled multi-centre pragmatic trial with embedded economic and process evaluations.

**Marie Partner** in collaboration with AstraZeneca - OSPREY CR: Optimising Secondary PREvention and quality of life following Early Cardiac Rehabilitation (OSPREY CR). This study is now open to recruitment and will be exploring which parts of cardiac rehabilitation patients believe are important for adherence to CR and improving health related quality of life. Also the study hopes to understand how healthcare systems and current practice attempts to help patients adhere to longer-term health behaviour change of the CR core components.

**Lauren Shaw** - VenUS 6: Adjustable hook-and-loop-fastened compression systems for the treatment of venous leg ulcers. This study will involve patients with venous leg ulcers to be randomised to different compression bandages.

**Tricia Fox** - A cluster randomised controlled trial to assess the effectiveness and cost-effectiveness of the 'Your Care Needs You' intervention to improve safety and experience of care transitions (The PACT study). This package of care is looking at enhanced information given to patients during their admission and on discharge from hospital.

### Commercial studies

**Dietetics** have a number of commercial studies with Nutricia and other commercial companies, which are soon to open and will be looking into various delivery mechanisms of improved feeding and high-protein food products.

The Clinical Research and Innovation Office (CRIO) are still advising us on which studies are appropriate to consider opening and are now looking at non COVID ones that are not impacting on other support services such as laboratories or pharmacy. We hope to be able to open more studies over the coming months.

If anyone has any queries about studies they are involved in then please let [Sarah](#) or [Carolyn](#) know. They are happy to discuss any possible new studies with you as well.



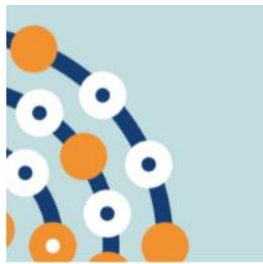
### Research Books Available to borrow

Please see attached list for further details, or contact [Kat Sumner](#) to arrange collecting any books to loan from the CCA Research Centre.



Adobe Acrobat  
Document





## Participant Research Survey (PRES)

STH has agreed to participate in Participant Research Experience Survey (PRES) for the Clinical Research Network. This survey only relates to those studies that are on the CRN portfolio. If you are recruiting participants to a portfolio study then you are asked to provide them with a copy of the survey (see below link). For those that are about to open a portfolio study then we will share this with you when you get the green light to start recruitment. Below is some further information that we have received from the research office to explain the process further.

You can also download copies of the survey [here](#). If you have any queries then please do get in touch with [Carolyn Taylor](#).



## The use of reflective tasks following a pandemic

We have the opportunity for clinical staff to be involved in a research project to understand the impact of written reflective tasks on healthcare staff, who are experiencing mental health difficulties and to determine if different types of reflective tasks have different effects. We are looking for people who work or have worked in a physical healthcare setting during the COVID-19 health pandemic, in a patient-facing, direct care role, based in the UK and those who have also noted their mental health has been affected.

Participants will be asked to complete written reflective tasks online, once-a-week, over a 4-week period. The online task will involve people thinking about their life, people in it and their experiences over the previous week and then writing about them, alongside completing a short questionnaire, which should take around 15-20 minutes to complete each week. Additional questionnaires will be completed once at the beginning and once at the end of the study, taking around 6-8 minutes to complete each time. This can be completed via mobile telephone, tablet, PC or laptop with access to the internet.

For any questions, please [email](#) the main researcher Vicky Lamb, Vicky is a DCLin Psychology trainee studying at The University of Sheffield. If interested then please follow this [link](#) or scan the QR code in the accompanying advertisement.

**We Need**  
**Staff working in**  
**healthcare**  
**for reflective practice research**

Win up to £75 in Amazon vouchers  
Plus, you may be able to use this research as evidence towards Continuing Professional Development (CPD)

1. Have you worked in a physical healthcare setting during the COVID-19 health pandemic?
2. Do you have direct contact with patients?
3. Has your mental health been affected?

If so, you may be eligible to take part

For more information Scan the QR code above (using your phone's camera) or click/search the link below:  
[https://sheffieldpsychology.eu.qualtrics.com/jfe/form/SV\\_1XJ05MDmstN9kN](https://sheffieldpsychology.eu.qualtrics.com/jfe/form/SV_1XJ05MDmstN9kN)

## Slip-resistant footwear to reduce slips among health-care workers: the SSHeW RCT

Slips, trips and falls are the main cause of injury in the workplace, with over 100,000 people being injured last year. Health and social care has some of the highest numbers of slips and trips at work, often due to the type of flooring. This study offered a pair of 5-star, GRIP-rated footwear to half the participants who worked across wards, catering and cleaning in 7 NHS Trusts. There were 2275 participants in the intervention arm and 2278 in the control arm. The primary outcome was the rate of self-reported slips in the workplace over 14 weeks. Secondary outcomes included the rate of falls from a slip or not resulting from a slip, proportion of participants reporting a slip, fall or fracture, time to first slip and fall, health-related quality of life and cost-effectiveness. The footwear reduced slips in the workplace, was acceptable to participants and could be cost-effective.



Cockayne S, Fairhurst C, Zand M et al, Slip-resistant footwear to reduce slips among health-care workers: SSHeW RCT. *Public Health Research* 2021; 9:3. For more information and access to the full article click on this [link](#).

**AHP Research Survey** - Are you an Allied Health Professional (AHP)? Do you work in the NHS or provide NHS healthcare at least one day per week? Do you care about high-quality patient care, research evidence, and professional development? The Council for Allied Health Professions Research (CAHPR) and National Institute for Health Research (NIHR) would like all AHPs working in the NHS to complete an important national survey, whether you are involved in research or not. The survey asks about your research skills and confidence, and about the support from your employer to engage in research activity / use research findings to inform practice. Your responses will provide crucial information to help shape the support needed to increase research skills for all AHP's.





## PPI Update:

**Jenni Crisp:** The **Stroke & Aphasia PPI panel** has made the transition to online meetings well, and we are meeting monthly on Mondays via Teams for one hour. The group has recently welcomed 3 new members and more are always welcome. We have recently discussed alternative technology for driving assessment, the role of the Advanced Nurse Practitioner on stroke, Patient Experience surveys and electrical stimulation for upper limb recovery. Several panel members also participate in focus groups and co-design work with researchers who have presented to the panel. We anticipate continuing with a mix of mostly online and some face to face meetings as restrictions allow. *Jenni's contact details are [jenni.crisp@nhs.net](mailto:jenni.crisp@nhs.net) or 07814 237997.*

**Anne Silvester:** The **Across the Care Group Panel** held a successful virtual meeting in May, as well as providing feedback to researchers via phone and email. The proposed date of the next meeting is Thursday 2nd September. It is hoped this meeting will be in person, but if restrictions are still in place the panel will continue to meet virtually. Details about the time and venue will be made available nearer the time. Some panel members are also available for phone consultations. *Any researchers wishing to consult the panel please contact Anne via email: [anne.silvester@nhs.net](mailto:anne.silvester@nhs.net).*

The **Community Elders Panel** has been mostly inactive due to the Covid situation but hopes to be available for consultation again as restrictions are eased.



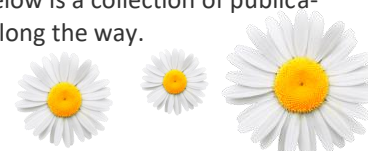
## Care Group Publications:



We are proud to be celebrating the final [publication](#) of the remote home visit research collaboration; '*Remote home visits: Exploring the concept and applications of remote home visits within health and social care settings*'.

The remote home visit project has been undertaken over a number of years in collaboration with Sheffield Hallam University and the University of Sheffield. Occupational Therapists identified that there was a potential for remote visits into the home environment many years before we were found ourselves in the middle of a pandemic and needed to use this technology out of necessity. A research project led by Occupational Therapists has provided clinicians with an opportunity to get involved with research on many levels as well as explore a new area of clinical practice. This recent study consulted intended users and adopters of technology about a remote home visit application called Virtual Visit Approach. Participants were shown a video of a 'mock' remote home visit <https://www.youtube.com/watch?v=9kCweaznXZI> and asked to discuss the potential benefits, barriers and uses they could envisage. The opportunity to conduct remote home visits was regarded as a positive adjunct to usual practice. However, concerns about the quality of remote assessments were expressed by participants. The NHS response to COVID-19 sparked a national roll out of the use of video conferencing technology. The opportunity to access technology to conduct remote visits and consultations, has instigated a seismic change in the way healthcare is delivered now and for the future. However, there is much we do not yet know about the impact on the intended adopters and users of remote visits and consultations. This study demonstrated the importance of involving intended adopters and users in the co-design of technology to explore potential benefits, barriers and uses providing valuable insights to inform future design and development.

The ViVA research team would like to take this opportunity to thank the many colleagues that have been involved and supported projects over the last few years providing invaluable feedback on the ViVA technology. Below is a collection of publications, blogs and videos which tell the story of the project, its progress and what we have learnt along the way.



### RECENT PUBLICATIONS from members of the Care Group:

- **Are public health measures and individualised care compatible in the face of a pandemic? A national observational study of bereaved relatives' experiences during the COVID-19 pandemic** Catriona Mayland. *SAGE Publications, May 2021.*
- **Community end-of-life care during COVID-19: Findings of a UK primary care survey** Helen Chapman. *BJGP Open, June 2021.*
- **National survey evaluating the provision of gastroenterology dietetic services in England** Rachel Buckle, Christian Shaw, Nick Trott. *BMJ Journals, July 2021.*
- **Fusion of higher order spectra and texture extraction methods for automated stroke severity classification with MRI images** Ali Ali. *Internal Journal of Environmental Research and Public Health, July 2021.*

