

Thank you for taking part in research.

Please tell us about your experience.

We are asking you to complete this survey because your child or a child you care for has taken part in research supported by the National Institute for Health and Care Research (NIHR). We fund and support research in the NHS as well as public health and social care research.

We want to make research better so that those who take part have the best experience possible. We would value your feedback to help us do this.

Taking part in the survey is voluntary. The survey usually takes up to five minutes to complete. There are no right or wrong answers to any of the questions. It will not affect the care or treatment your child receives, whether or not you choose to leave feedback.

Privacy and Data Protection

This anonymous survey is being undertaken on behalf of the NIHR and as such, any information collected will be subject to the terms of use and protections as outlined in the NIHR Privacy Policy (www.nihr.ac.uk/documents/nihr-privacy-policy/12242).

Your responses and comments will be shared anonymously with the NIHR and any healthcare providers (e.g. GP practice/hospital) involved in the research study you are/have been part of. No identifiable data will be shared with any third party.

This survey is for ages 0 to 6 to be completed by a parent or carer.

If you require more information, or have any questions about this survey, please email:
pres.crn yorkshumber@nihr.ac.uk

Follow us on social media:

w: <https://local.nihr.ac.uk/lcrn/yorkshire-and-humber/>

t: https://www.twitter.com/NIHRCRN_yorks



Please rate how strongly you disagree or agree with the following statements about your child's research experience. Tick inside the face or circle that matches your answer best. Please think about the research your child is currently participating in, or has most recently taken part in.

The information that I received about the research when my child was invited to take part was easy for me to understand



Hard



Somewhat hard



Neither easy nor hard



Somewhat easy



Easy



I don't remember

I feel I have been kept updated about this research study



Strongly disagree



Disagree



Neither agree nor disagree



Agree



Strongly agree



It is too early to tell

I know how I will receive the results of this research study



No



Yes, to some extent



Yes

I know how to contact someone from the research team if I have any questions or concerns



Strongly disagree



Disagree



Neither agree nor disagree



Agree



Strongly agree

I feel research staff have valued my child taking part in this research study



Strongly disagree



Disagree



Neither agree nor disagree



Agree



Strongly agree

Research staff always treated my child with courtesy and respect



Strongly disagree



Disagree



Neither agree nor disagree



Agree



Strongly agree

I would consider my child taking part in research again



Strongly disagree



Disagree



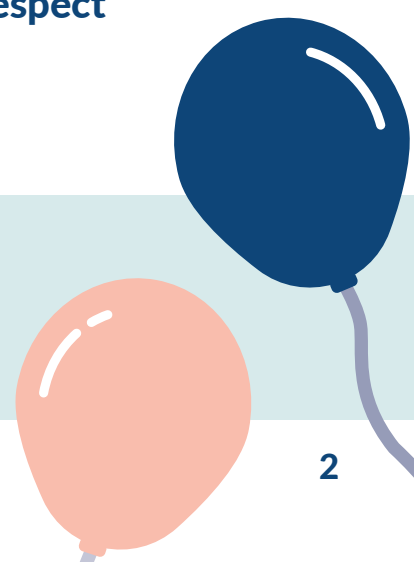
Neither agree nor disagree



Agree



Strongly agree



Please use the boxes below to explain your answers to the previous questions or provide any other feedback on your child's experience in this research.

To maintain anonymity, please do not share any information in these boxes that could identify you or your child e.g. name, specific conditions/rare conditions.

We may use your comments in reports about research and for promotional activities, but we will remove any information that does/ could identify your child before publishing any of your feedback.



What was positive about your child's research experience?

What would have made your child's research experience better?

How long has your child been taking part in this research study?

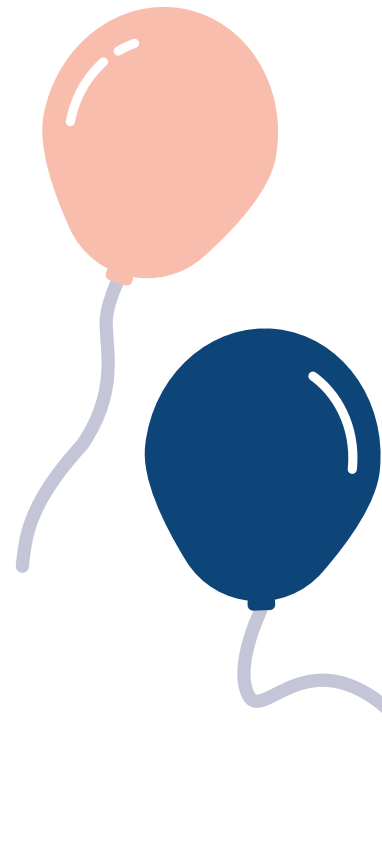
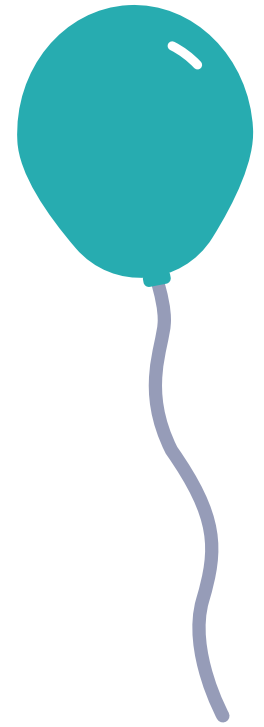
- Less than three months
- At least three months but less than one year
- At least one year but less than three years
- Three years or longer
- Not sure

Is this the first research study your child has taken part in?

- Yes
- No

Who answered these questions?

- The child
- The parent or carer
- Both the child and the parent or carer together



FOR STAFF USE:
Study name/acronym: _____
NIHR research site ID code (required): _____
Study IRAS/CPMS number (required): _____