

Reproductive Health Research Public Advisory Panel

Obstetrics, Gynaecology and Neonatology (OGN) Directorate, Jessop Wing
Academic Unit of Reproductive and Developmental Medicine (AURDM)

Our Group

Background:

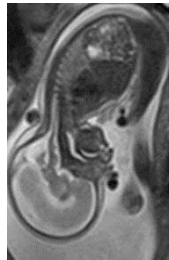
Our panel was setup by Dr Neil Chapman & Clare Pye (RN) in April 2014 with our first meeting



in August 2014. There are 12 of us from a range of backgrounds; you don't need to be medically or scientifically qualified.

The Panel is currently Chaired by Mr. Nic Rowe. Nic was one of the original lay panel members when this group was established.

How often do we meet?



We meet once every eight weeks or so. PPI members receive the study documents via email / post prior to the meeting so we can do much of the work at home at a time that suits us.

Contact Us

Clare Pye, RN
Directorate Research Co-ordinator,
Sheffield Teaching Hospitals NHS Foundation Trust,
Level 4, Jessop Wing,
Tree Root Walk,
Sheffield S10 2SF

Tel: 0114 2268194

Email: clare.pye@sth.nhs.uk

Dr Neil Chapman
Academic Unit of Reproductive and Developmental Medicine,
University of Sheffield,
Room JW4-56, Level 4,
Jessop Wing,
Tree Root Walk,
Sheffield S10 2SF

Tel: 0114 2268530

Email: n.r.chapman@sheffield.ac.uk

Our Research

We look at all research ongoing within the Directorate and that of the University of Sheffield. See these sites for further details:

www.sheffield.ac.uk/human-metabolism/research#reproduction

www.sth.nhs.uk/our-hospitals/jessop-wing

What areas of science/medicine do we cover?

We cover all areas of research undertaken including:

- Infertility-based studies
- Work looking at premature birth. See this article at BBC news: www.bbc.co.uk/news/health-21628912
- Obstetric research
- Breast-feeding studies
- Fetal heart monitoring
- Oncology-based research
- Neonatology medicine/nursing
- Gynaecology studies including Incontinence, Perineal trauma & Endometriosis.
- Review service evaluations, ethics applications and consent forms for research involving patients.

How have researchers responded to you and your feedback and what patient benefits have been achieved?

Very positively. The group influenced a change to a proposed HTA study to be more patient focused and our feedback was instrumental in helping to secure over £1million in research funding. Not bad for our first "big" grant review...!

We need YOU!



Please get in touch if you would like to become involved!

Key Successes

Since the last meeting this panel has dealt with a significant number of research studies and given feedback to all principal Investigators. Examples include...

BLAST Study...



This research uses ultrasound to diagnose overactive bladder syndrome, a condition which effects 1 in 6 adults.

The study Chief Investigator is Mr. Stephen Radley, a Consultant Uro-gynaecologist within the Directorate & Dr. Patrick Campbell, a Specialists Registrar. It is hoped this study will offer an easier way of diagnosing this condition.

Checking the Baby's Heart...



Some women have their baby's heart rate monitored during labour because the midwife wants to check that the

baby is not becoming distressed. But, this monitoring stops the woman from moving freely. This study, lead by Dr. Habiba Kapaya, will test a new light-weight monitor that can look at the baby's heart but also allow the mother to move around the labour ward.

Born too Early...

Worldwide, being born too early (before 37 weeks gestation) affects 15million births; of these 1 million babies will die. To try and understand why the womb starts to contract too early, a study devised by a newly-qualified scientist at the University of Sheffield, Dr. Sarah Waite Will look at how womb cells talk to each other. If we can understand this cell "chatter" it is hoped this will help develop better treatments for this problem.



Thank you to Sheffield Hospitals Charity for their Sponsorship